

Dødelighed ved epilepsi



Jakob Christensen, Neurologisk Afdeling, Aarhus Universitetshospital

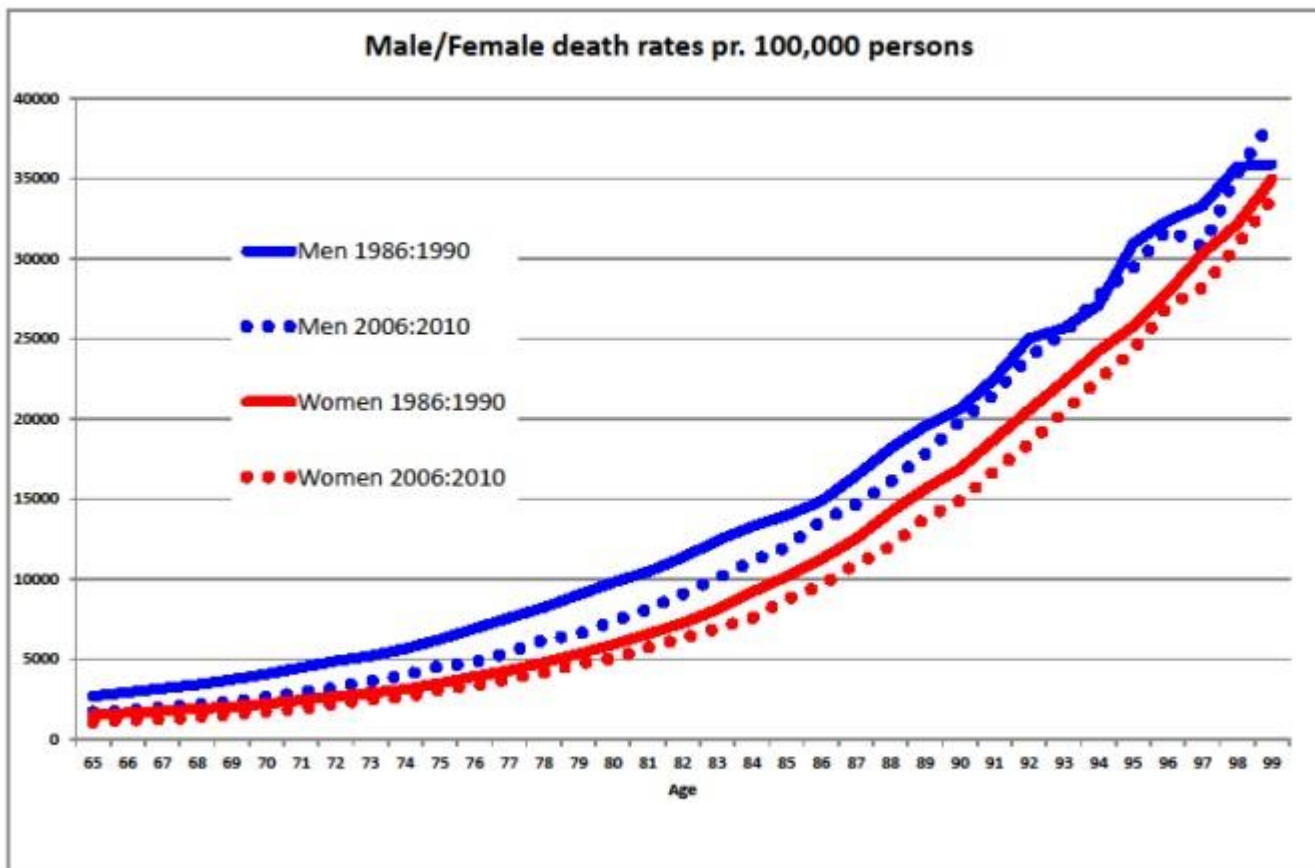
Disclosure

Company Name

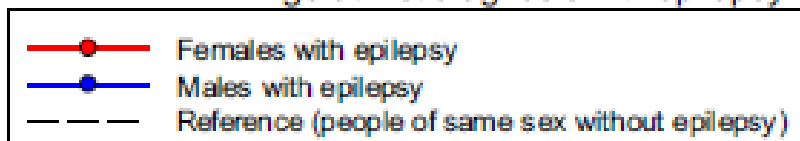
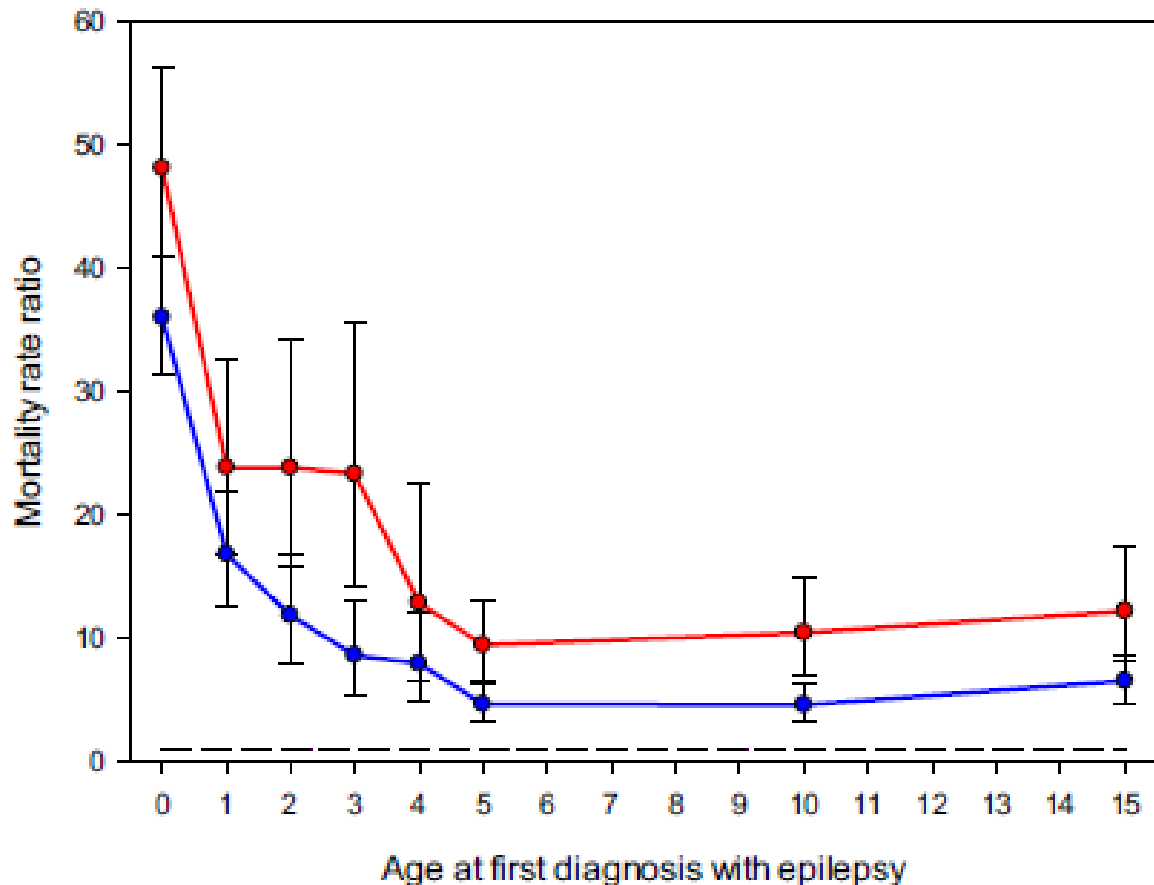
Nature of Affiliation

- UCB
Serving on a scientific advisory board, and honoraria for speaking engagements
- Eisai
Serving on a scientific advisory board, and editorial board, and honoraria for speaking engagements
- Novartis
PI of clinical trial
- Pfizer
PI of clinical trial
- Non-profit organization
The Danish Epilepsy Association
Novo Nordisk Fonden

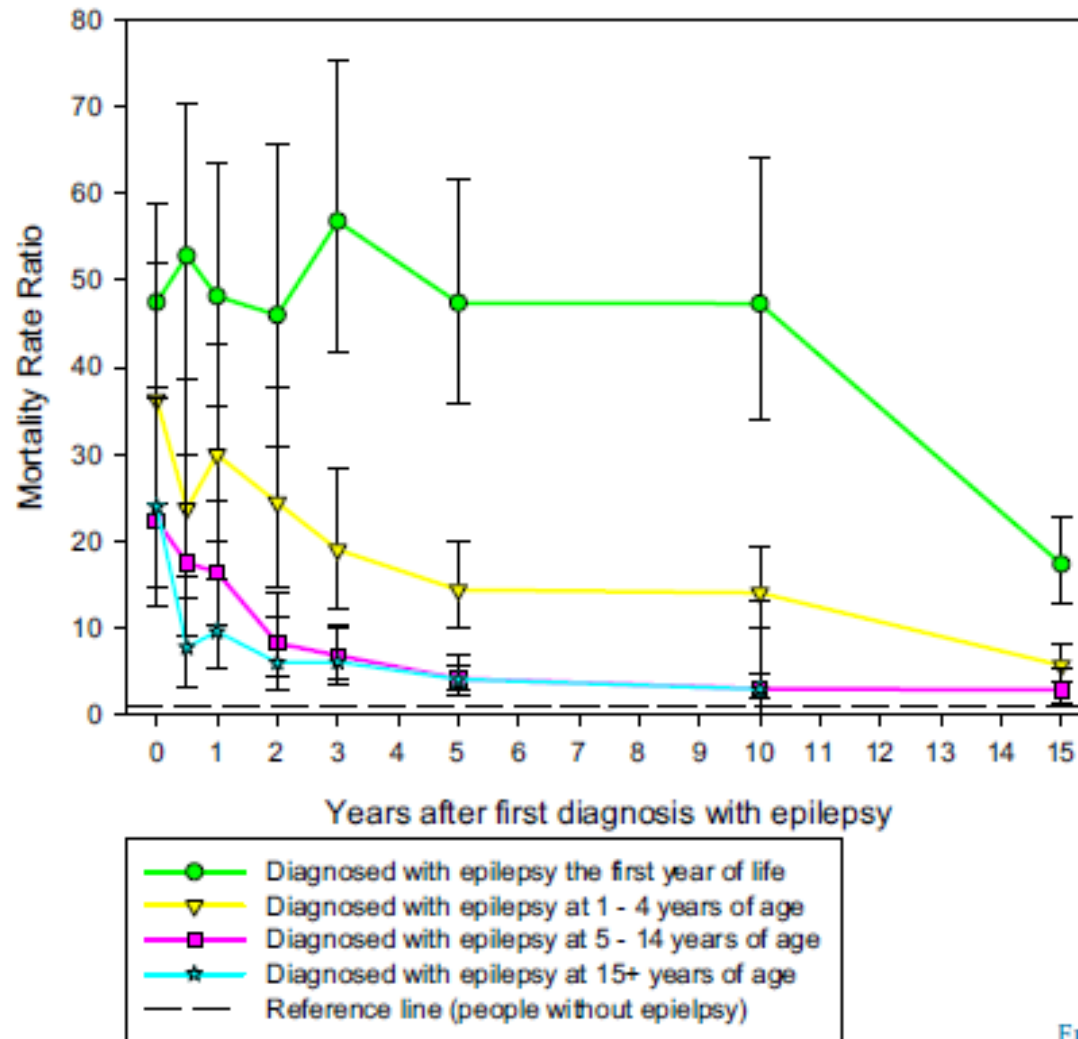
Risiko for at dø



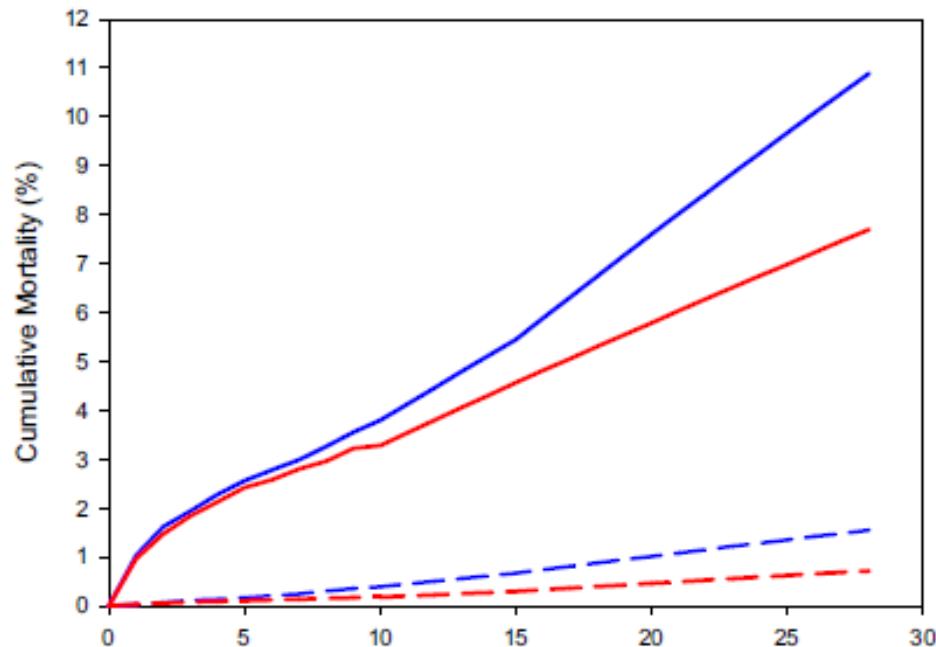
Dødelighed - alder



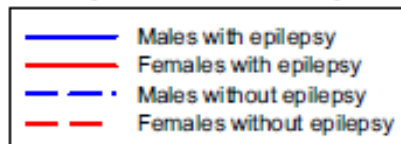
Dødelighed efter diagnose



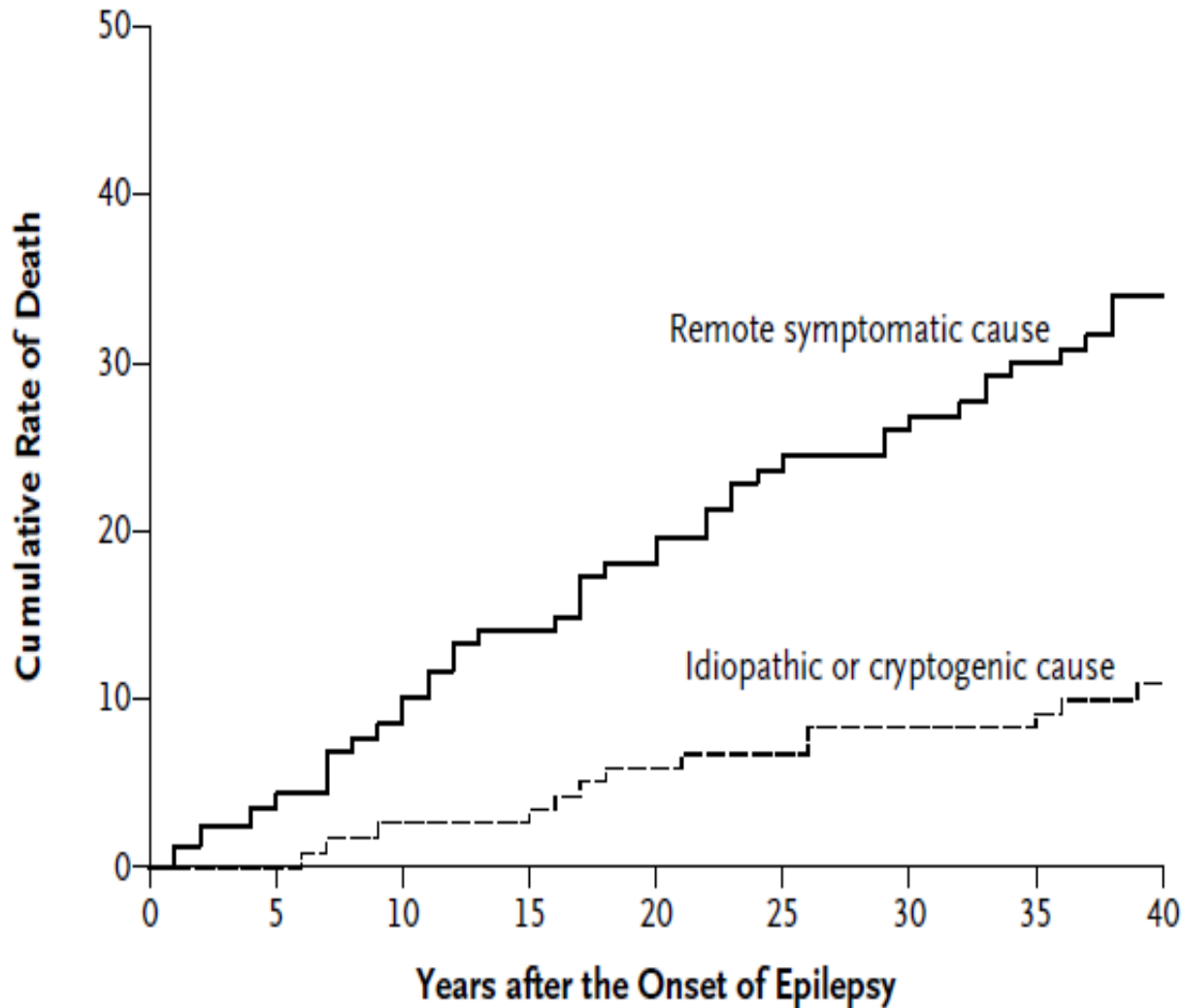
Risiko for at dø (%)



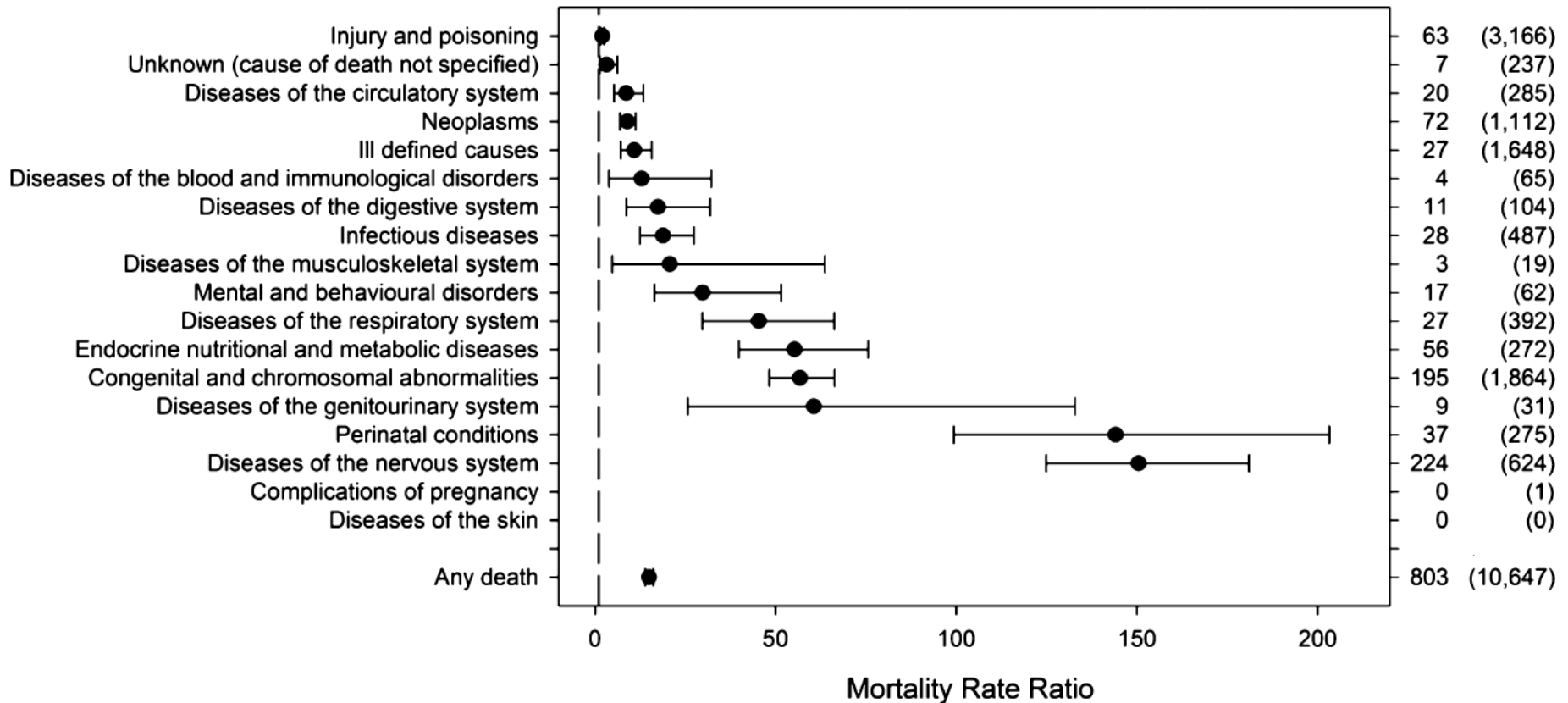
Years after day of epilepsy diagnosis in persons with epilepsy and years after index day in matched persons without epilepsy.



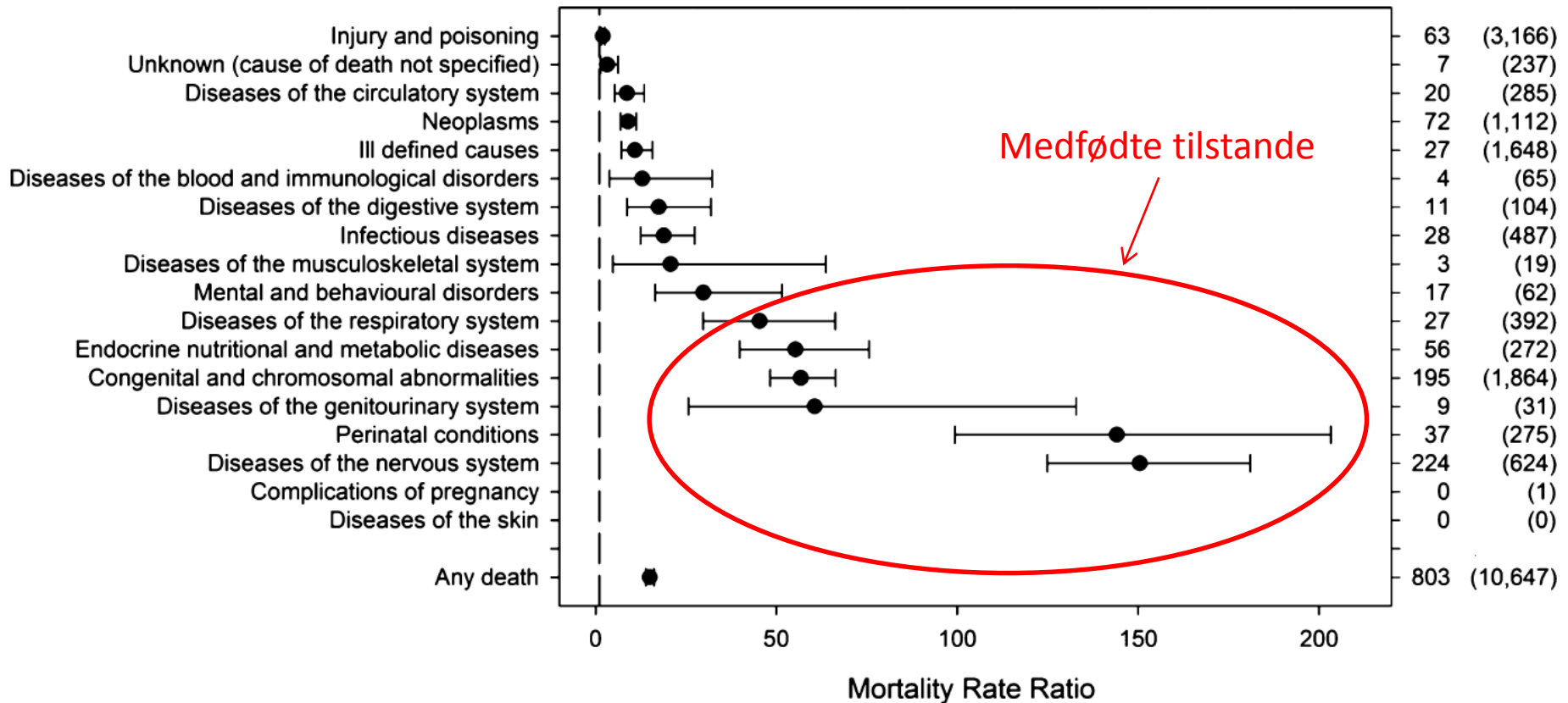
Epilepsitype



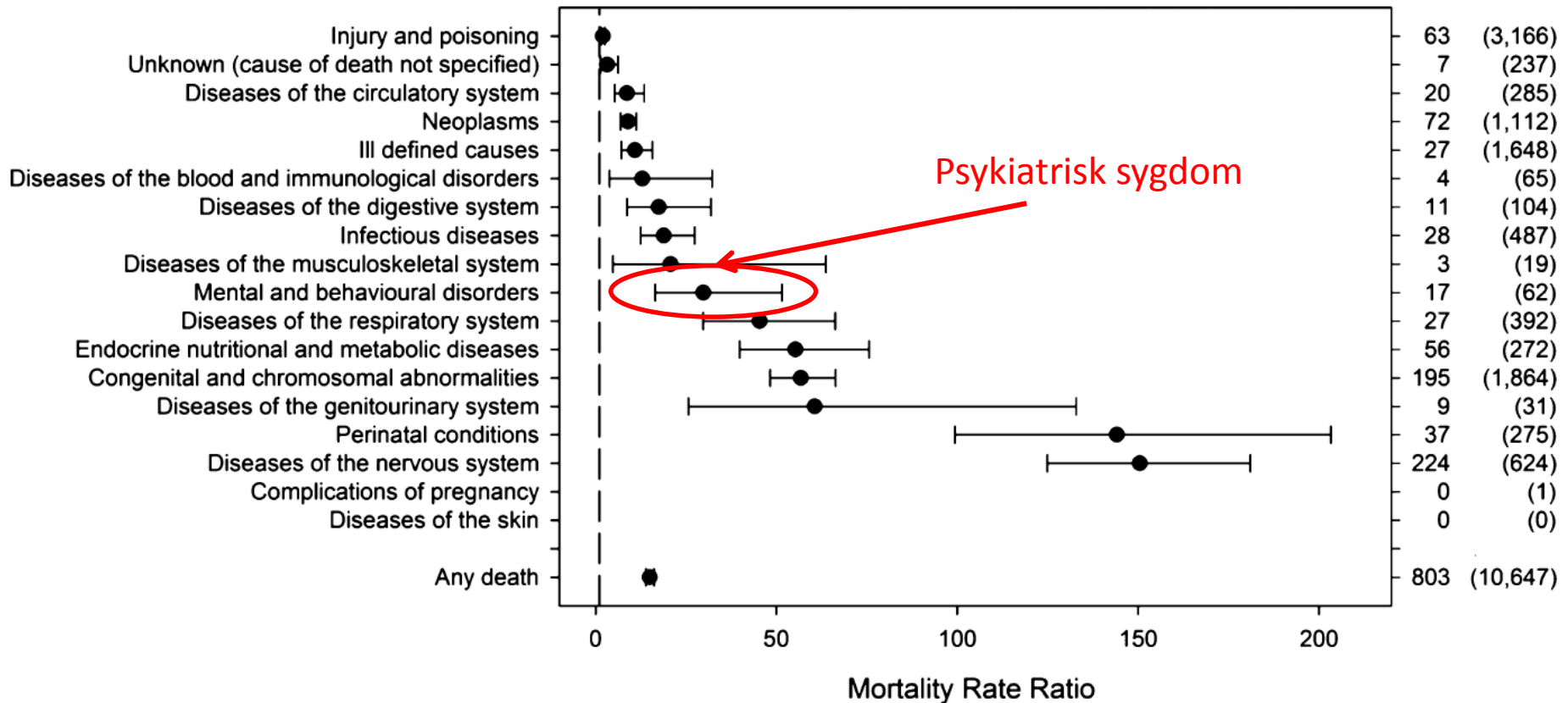
Dødsårsager



Dødsårsager



Dødsårsager

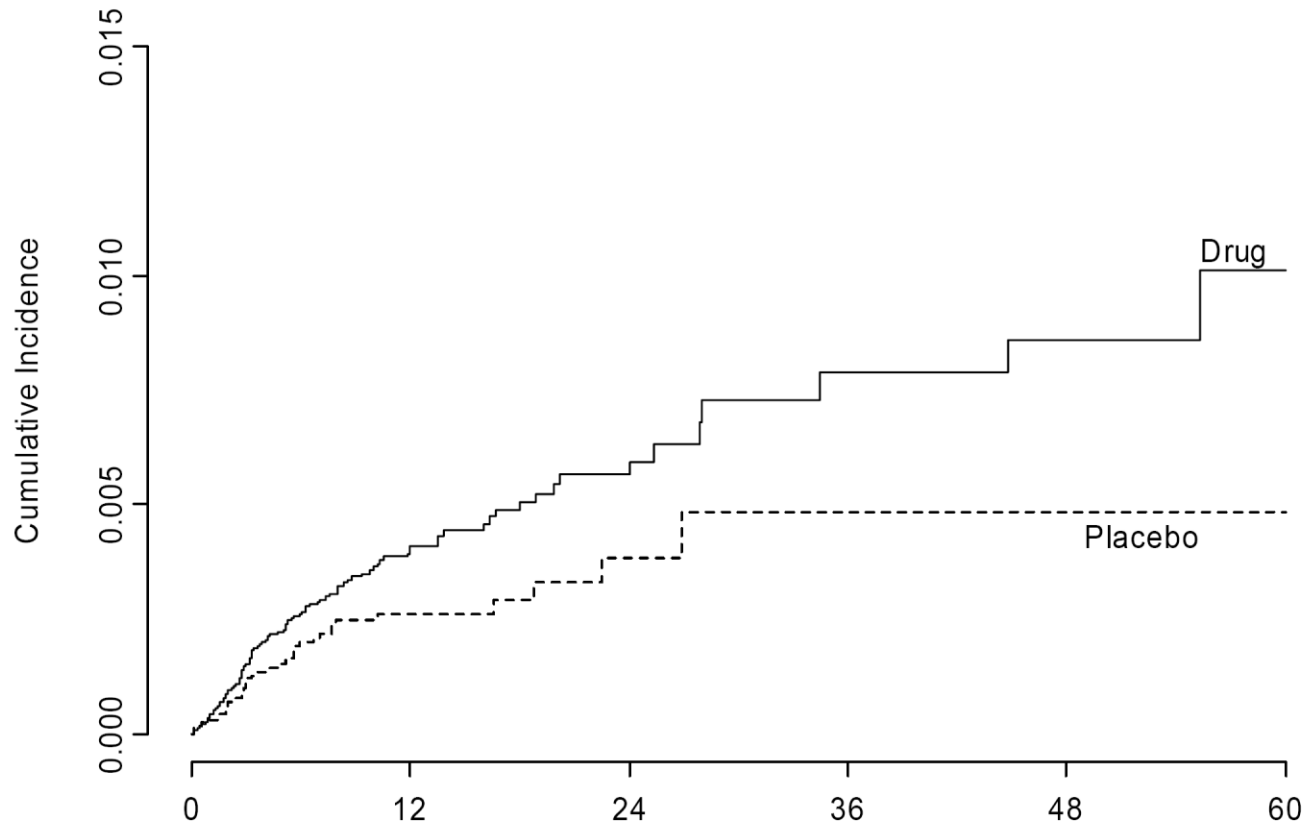


Epilepsi, psykiatrisk sygdom og selvmord

Psykiatri	Epilepsi	Selvmord	Kontrol	Relative Risiko*	95% CI
No	No	11,668	400,542	1.00	-
No	Yes	185	2,596	1.99	1.71 – 2.32
Yes	No	9,009	19,446	12.5	12.0 – 12.9
Yes	Yes	307	544	13.7	11.8 – 16.0

*Justeret for: civilstand, jobstatus, indkomst, kommune og sygemeldinger

Medicin og selvmordstanker



Number At Risk

Weeks

27854

12549

3716

1610

1178

494

Drug

16021

7410

1770

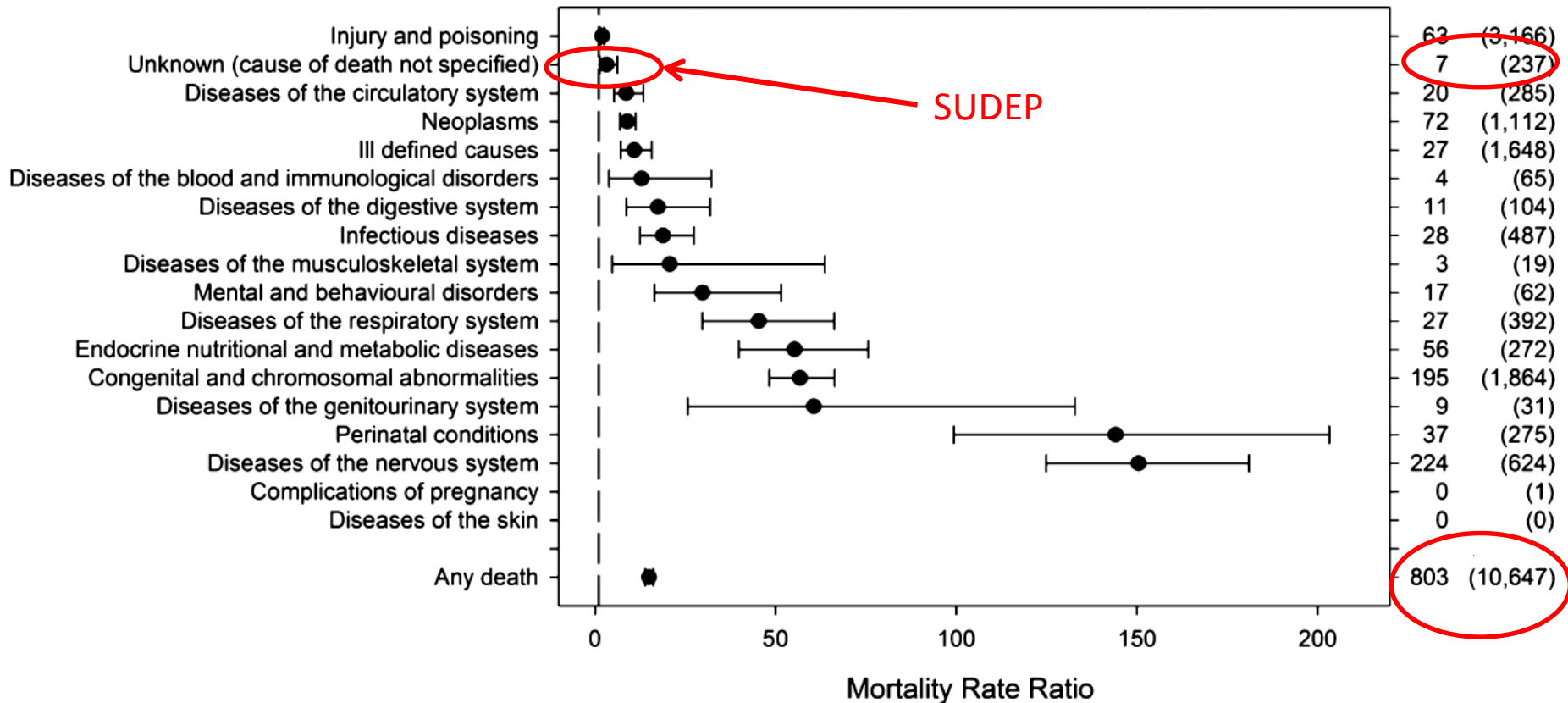
714

465

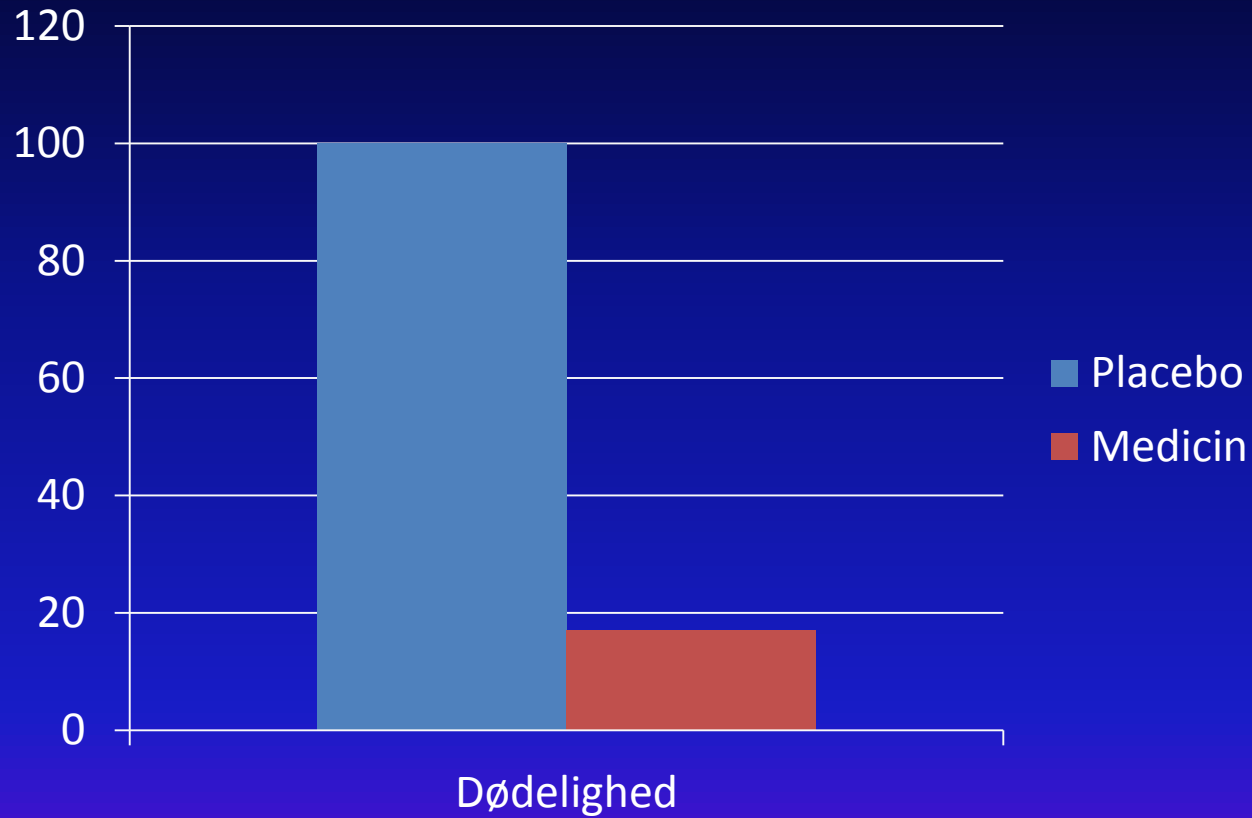
153

Placebo

Dødsårsager



SUDEP



Lancet Neurol. 2011 Sep 19.

Konklusion - dødelighed

Øget ved epilepsi

Høj hos yngre

Høj kort tid efter diagnose

Speciel risiko ved

Psykiatrisk sygdom

SUDEP

Tak

